



Pastoral support for schools

How can the Church support the wellbeing of the school community?

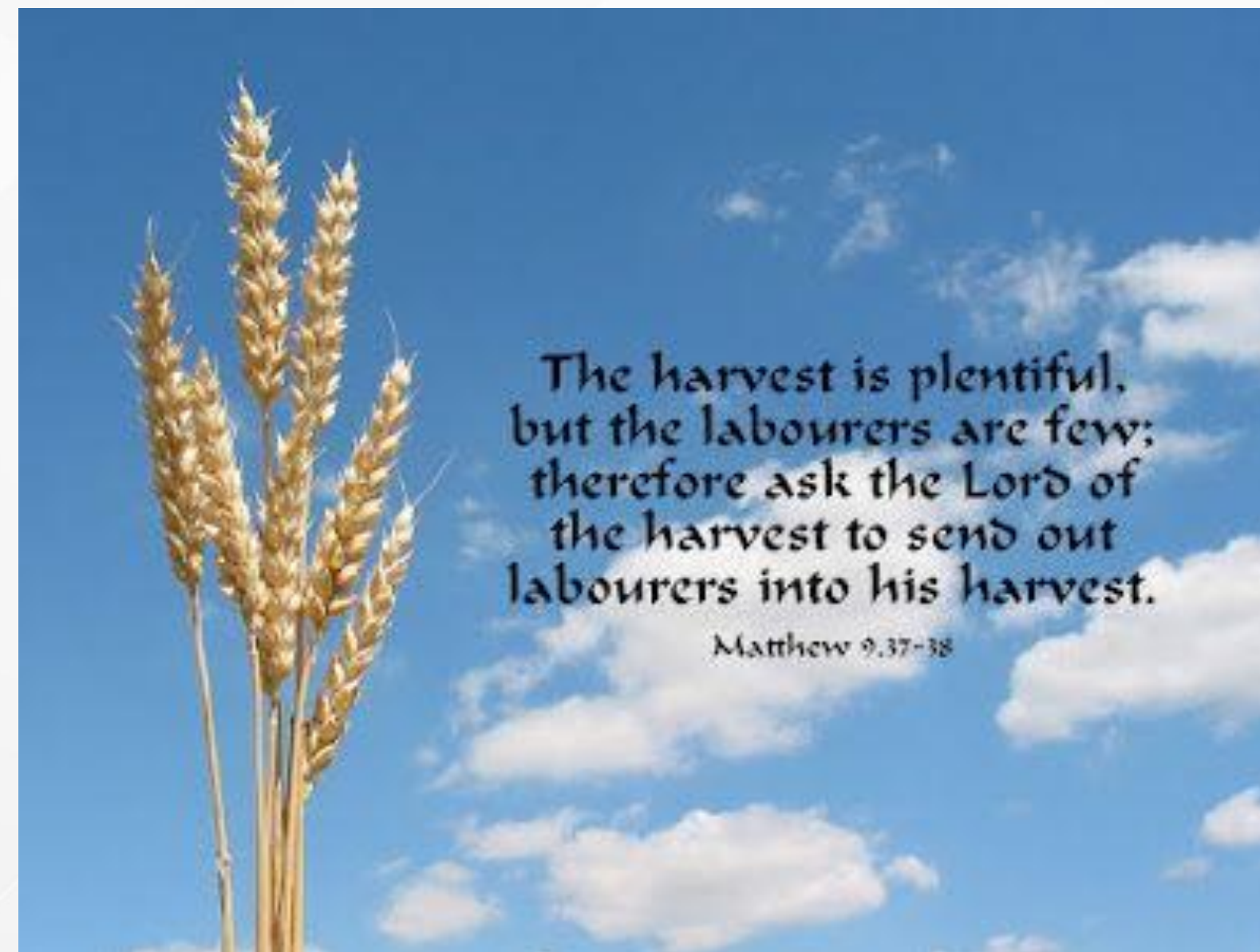
Leicester Diocesan Board of Education

Transforming the lives of children & young people through effective, distinctive, rooted & inclusive education



Theological basis

Matthew 9:35, "Jesus went through all the towns and villages, teaching in their synagogues, preaching the good news of the kingdom and healing every disease and sickness".



Prayer

Rejoice
Pray *always;*
without ceasing;
in everything
give thanks;
for this is God's will for you
in Christ Jesus.

| Thess 5:16-18

DuctTapeAndDenim.com

Let the little children
come to me
and do not hinder them,
for to such belongs

the
kingdom
of heaven

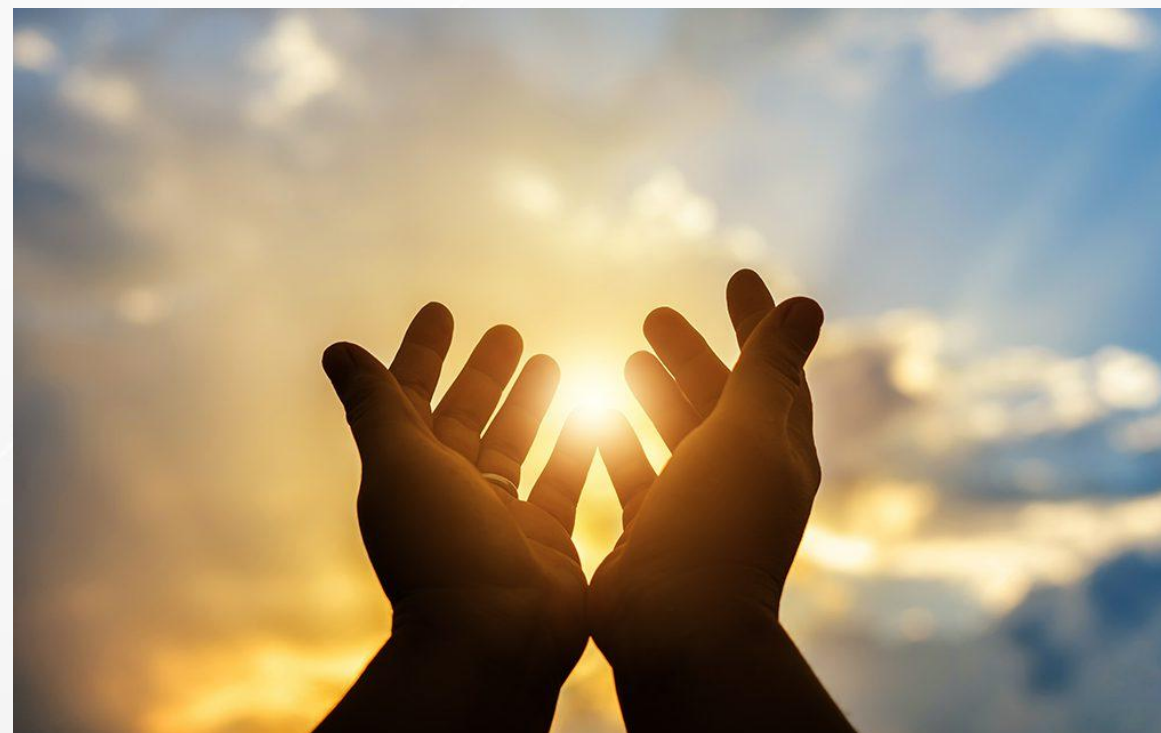
Matthew 19:14 (ESV)

DoNotDepart.com



Prayer

- Do we routinely pray for our local schools during intercessions?
- Do we ask our local schools what they need prayer for?
- Do we know the calendar of the school and what they have going on to inform our prayers?
- Could we have a prayer box in classrooms and the staff room that Church volunteers pray over or include in intercessions?



Spirituality

- Ofsted and SIAMS requirements to develop spirituality within schools.
- Development of the connection of self, others, world around them and God.
- How could Church help with the connection to God?
 - Collective Worship support
 - Q+A in RE lessons
 - Lunch clubs
 - Afterschool clubs
 - Visits to Church
 - Big questions
 - Prayer spaces <https://prayerspacesinschools.org/>



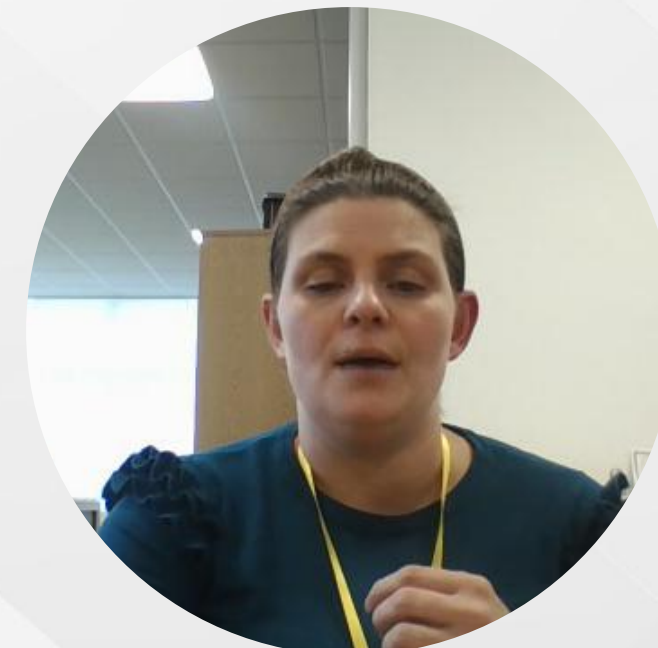
Supporting leaders

- Headteachers and senior leaders can often feel isolated in their role. How can Church offer pastoral support here?
- Build relationships first! Look at training on how to help support schools in different ways and how to build new relationships with schools.
<https://www.leicesterdbe.org/growing-faith/>
- Check in visits – short and sweet – note pressure points on next slide. Based around listening.
- Offer prayer
- Prayer box for head



Pressure points

- What are the times of year when it feels most pressurised in school and how could people from Church help with this?
 - Just before half terms and the end of term
 - Exam season and SATs week
 - Christmas / Easter / End of year when shows and plays might be happening
 - School trips
 - Report weeks
 - Parent evening weeks



Thinking time

What has resonated with you on this training?

Is there one idea you would like to explore further?

What is involved in taking this forward? Who is involved?

What barriers might there be in taking this forward?





THANK YOU

Leicester Diocesan Board of Education

tracey.manns@leciesterdbe.org





Transforming the lives of children & young people through effective, distinctive, rooted & inclusive education.

Diocesan Board of Education

www.LeicesterDBE.org

